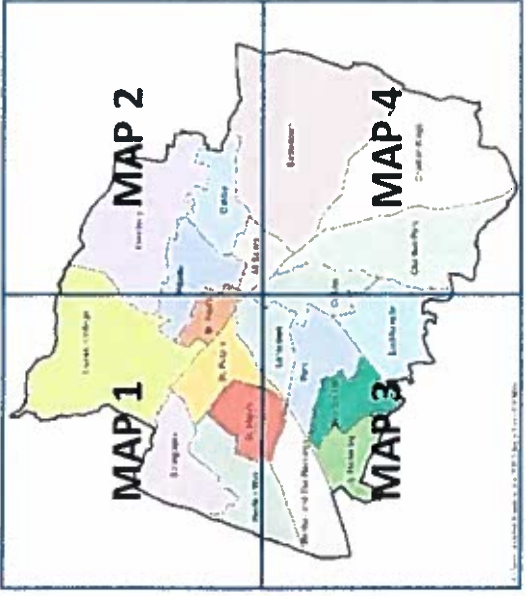


HOUSING MAP 1

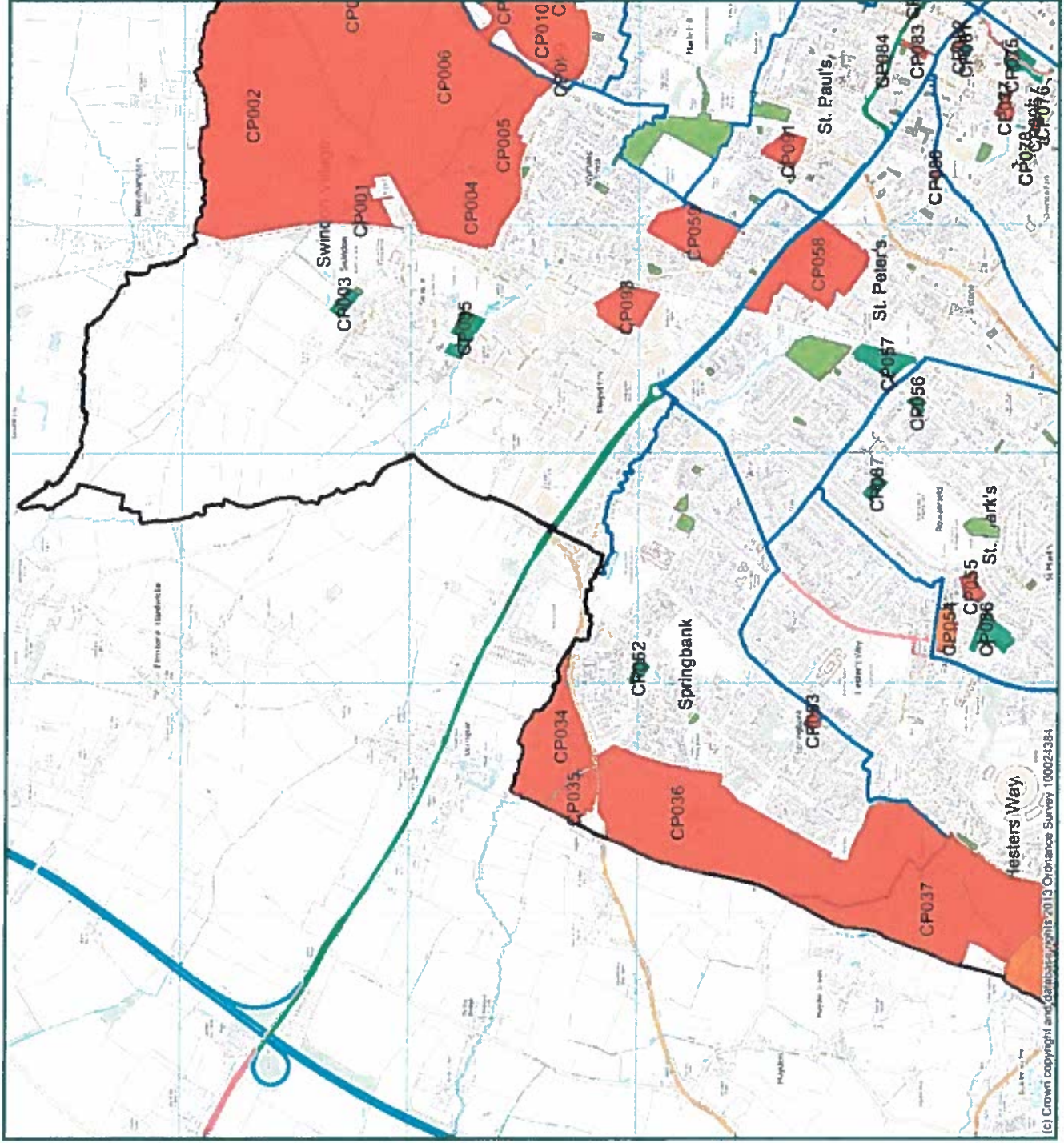


Refer to site proforma to view details of the sites coloured Red, Amber and Green (you will need the site reference no.)
 Make comments online

Cheltenham Plan I&O sites

- Planning Permission for residential use (April 2014)
- Greatest potential for housing development
- Potential issues or not as favourable as green sites
- Current not considered suitable for housing

Cheltenham
 Borough Wards



HOUSING MAP 2

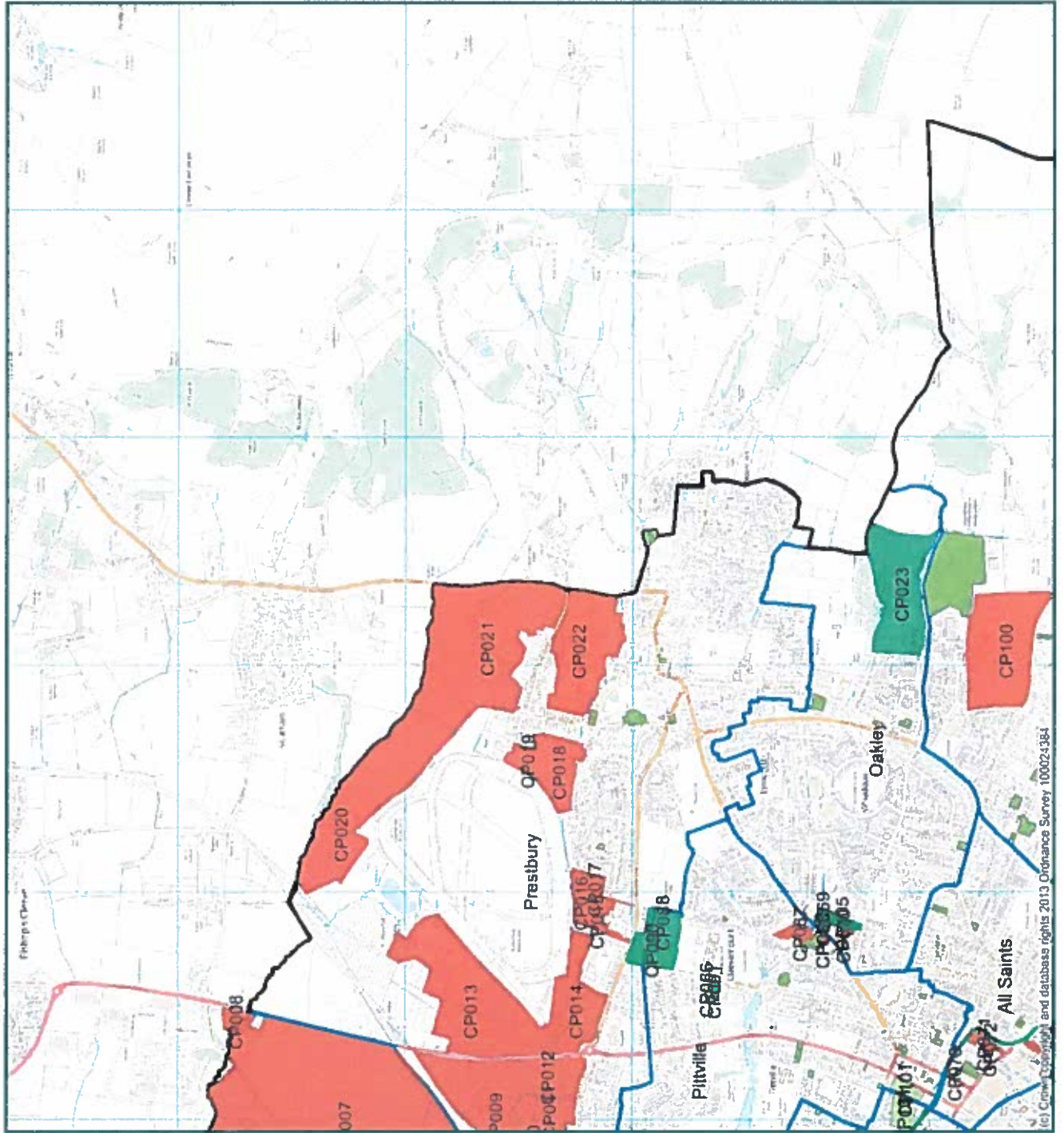


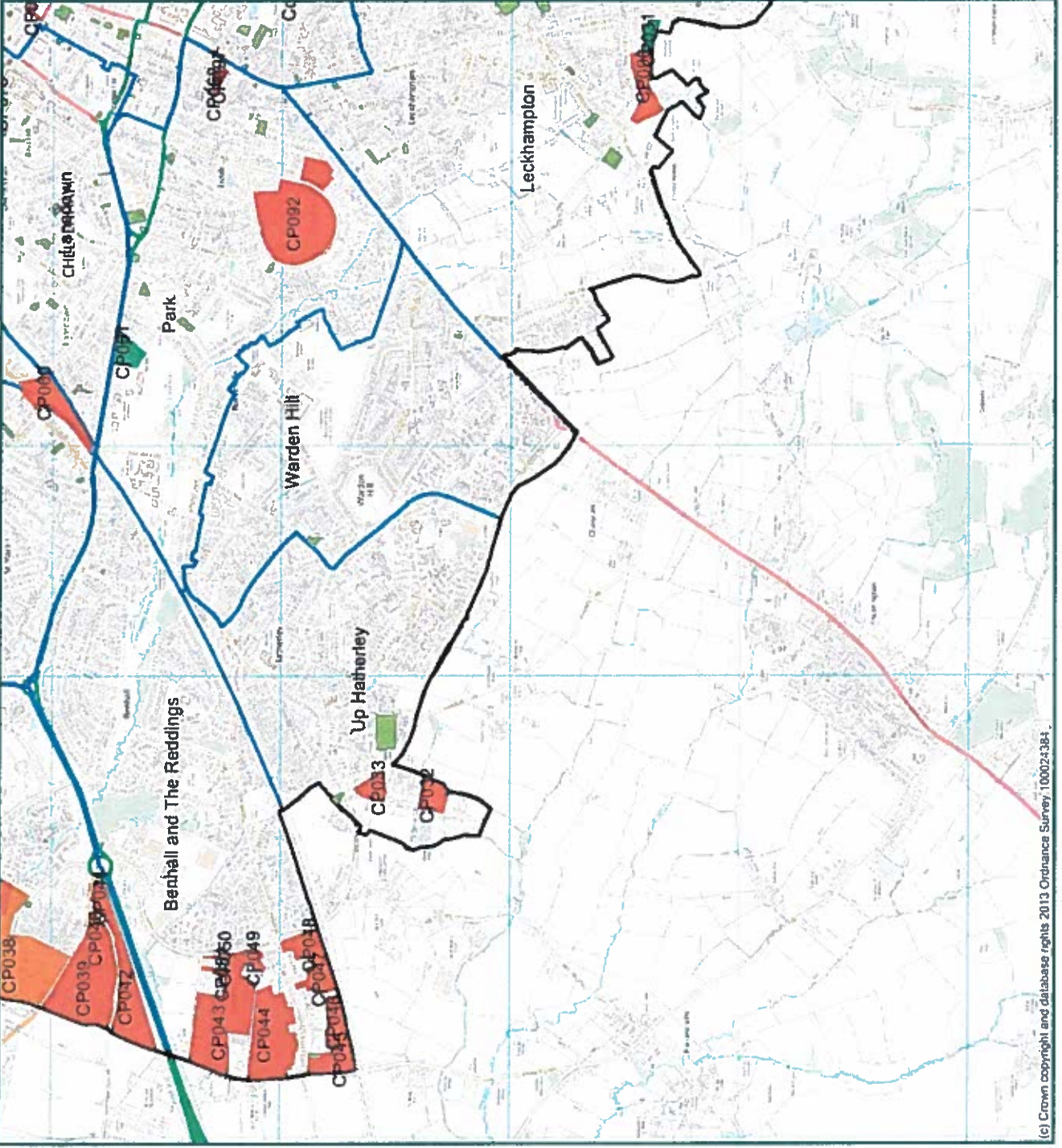
Refer to site proforma to view details of the sites coloured Red, Amber and Green (you will need the site reference no.)
 Make comments online

Cheltenham Plan I&O sites

- Planning Permission for residential use (April 2014)
- Greatest potential for housing development
- Potential issues or not as favourable as green sites
- Current not considered suitable for housing

Cheltenham
 Borough Wards





HOUSING MAP 3



Refer to site proforma to view details of the sites coloured Red, Amber and Green (you will need the site reference no.)

Make comments online

Cheltenham Plan I&O sites

- Planning Permission for residential use (April 2014)
- Greatest potential for housing development
- Potential issues or not as favourable as green sites
- Current not considered suitable for housing

Cheltenham
 Borough Wards



1:18000 at A3
 © Crown copyright and database rights 2015
 Ordnance Survey 100024384



(c) Crown copyright and database rights 2013 Ordnance Survey 100024384

HOUSING MAP 4



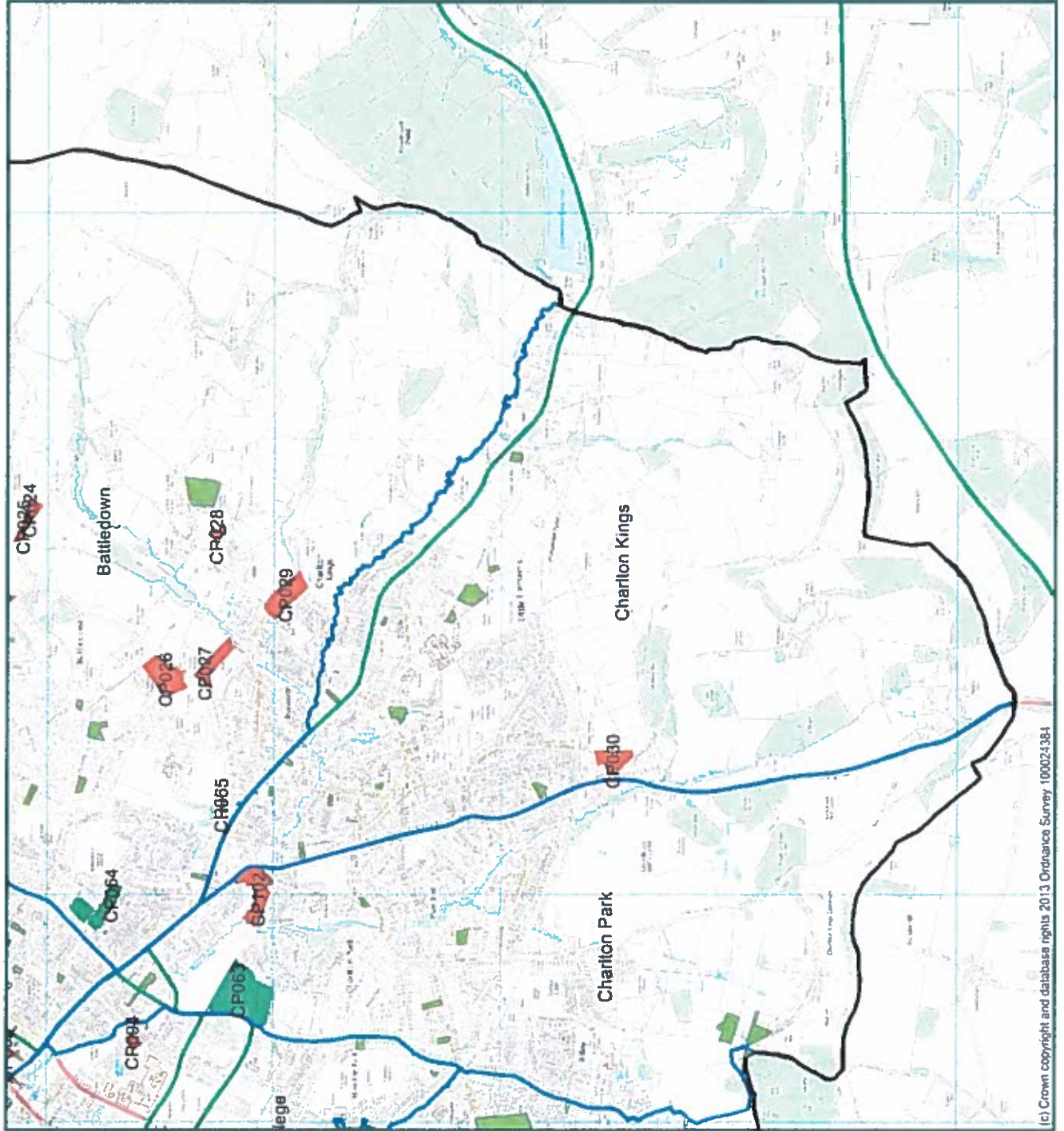
Refer to site proforma to view details of the sites coloured Red, Amber and Green (you will need the site reference no.)

Make comments online

Cheltenham Plan I&O sites

- Planning Permission for residential use (April 2014)
- Greatest potential for housing development
- Potential issues or not as favourable as green sites
- Current not considered suitable for housing

- Cheltenham
- Borough Wards



(c) Crown copyright and database rights 2013 Ordnance Survey 100024384



1:18000 at A3

© Crown copyright and database rights 2015
Ordnance Survey 100024384

